

A large, modern lecture hall with a wooden ceiling, white walls, and tiered seating. The ceiling is made of horizontal wooden planks with recessed linear lighting. The walls are white with vertical panels. The seating is dark grey and tiered. A large white letter 'B' with a red square at the bottom left is in the top left corner. A red rectangular box is in the center of the image, containing the text 'PROJECTS' and 'Education'. The word 'BEDDELEEM' is in the bottom right corner.

B

PROJECTS

Education

BEDDELEEM

## Partitions, ceilings and doors for schools

Schools prepare the young generations for the challenges of a sustainable future. This is done in an environment where materials are handled carefully, and Beddeleem is ready to provide support.

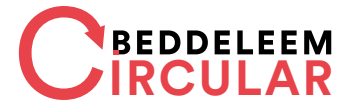
Our **modular, reusable systems** offer unprecedented advantages over plasterboard walls, such as **quick assembly and easy disassembly and reassembly**. These features make them perfect for educational environments that need to be set up quickly and adaptable to changing needs.

Choose our **relocatable partitions** and experience unprecedented **flexibility and efficiency** in any (re)layout.

“Our school environments meet both current needs and future challenges.”



KAREL DE GROTE | High school  
Antwerp



**MADE IN  
BELGIUM**  
produced in a  
CO2-neutral  
company

VIB UGENT | Research center  
Zwijnaarde



Our **JB 2000 range of relocatable partitions (solid and glazed)** is ideal for easily adapting classrooms to different sizes and purposes. The elements are 100% interchangeable.

Thanks to their modularity, a wide variety of specific configurations can be realized, meeting strict requirements for sound insulation, sound absorption, fire safety, and aesthetics. Moreover, they are upgradeable, allowing for extended use.

Also discover our range of moveable **JB 2000 ACCESSORIES**: whiteboards, book holders, nameplates, tablet holders, coat racks, absorbers, wall shelves,... These accessories do not damage the existing structure and can be easily moved at any time.

For organizing **fire safety zones and suitable escape routes for evacuations**, Beddeleem provides a suitable solution with the **JB FIREGLASS glazed partition** and associated door units with high fire resistance.



DON BOSCO | Secondary school  
Brussels

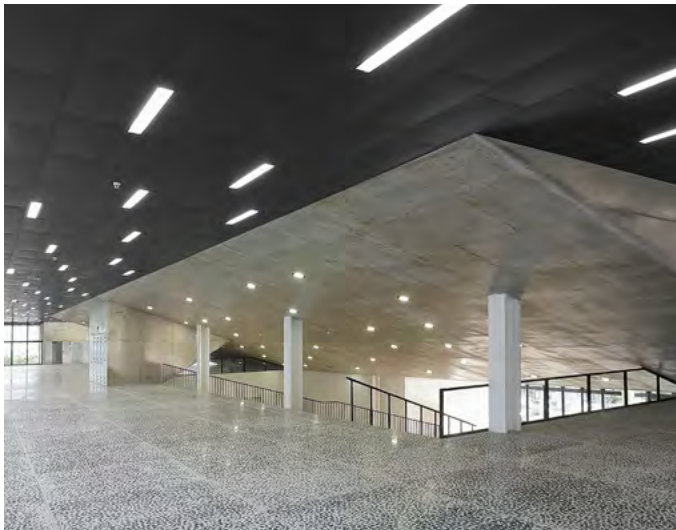




The **JB QBE** box-in-box units offer unique flexibility within open school spaces. These standalone and complete boxes with partitions, ceiling, ventilation, and furniture can be used to create a 'bubble' or enclosed space within a larger area. The system is **modular** and also **flexible** in terms of finishing. The system is **compatible with our wide range of partition and ceiling systems**, so the concept can be perfectly matched to your project.

## JB QBE

Space-within-space concept



**MONOVOLUME UFO | University of Ghent**  
Ghent

Our **JB COOL®** climate ceilings with easily accessible plenum and **JB DOOR** interior doors (including EI1 doors) are also designed with efficiency and sustainability in mind.

**Visit our website for sustainable total solutions for your school building!**

# BEDDELEEM

Venecoweg 14A, 9810 Nazareth

E [info@beddeleem.be](mailto:info@beddeleem.be)

T +32 9 221 89 21

[BEDDELEEM.BE](http://BEDDELEEM.BE)

